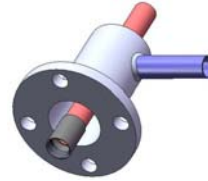
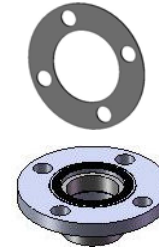


Structural Components in each TC40 Thermacouple® Earth Energy System Kit



1 Header/Distributor
(1 Each)



1 Outer Tube
Flange/Gasket
(1 Each)



1 PVC Male
Thread Adapter
(1 Each)



Finned Inner
Tube Sections
(14 Each)



1 End Cap
(1 Each)



Outer Tube
Sections
(14 Each)



1 Weld-On™ PVC 705
PVC Glue
(1 Each)



1 Weld-On™
P-70 PVC Primer
(1 Each)



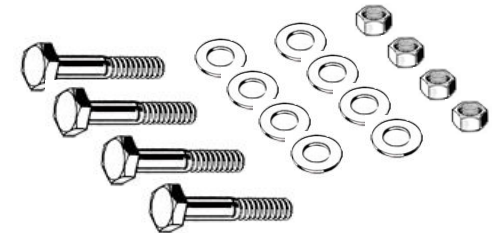
16 PVC Finned Inner
Tube Connectors
(1 Each)



10 MA300
Adhesive
Tubes
(10 Each)



1 MA300
Adhesive
Applicator
(1 Each)



4 Flange Bolts,
8 Washers,
and 4 Nuts
(1 Each)



TC40 Thermacouple™ Earth Energy System Kit includes the following components:

Quantity	Kelix Stock Number	Component Description
280 Feet	TC301	Thermacouple™ Finned Inner Tube
1	TC302	015030-180-0 Thermacouple™ Outer Tube End Cap 3"
280 Feet	TC303	014030-090-0 PIPE LTR BxS TAB Thermacouple™ Outer Tube.
1	TC304	Thermacouple™ Header/Distributor.
1	TC305	015030-170-0 FLG SET 3" Thermacouple™ Outer Tube Flange/Gasket.
1	TC306	1 ½" PVC Male Thread X Female Slip Adapter
10	TC307	Plexus™ MA300 Adhesive 50 ml
1	TC308	MA300 Adhesive Applicator
1	TC310	Weld-On™ 705 PVC Glue
1	TC311	Weld-On™ 70 PVC Primer
13	TC312	Thermacouple™ 1 ¼" x 4" SCH 40 PVC Inner Tube Connector
4	TC313	5/8-11 X 4 A325 HX Bolt Domestic H.D.G. S2C400A32DG
12	TC314	MA300 Adhesive Mixing Tips
4	TC315	5/8-11 2H HEAVY Hex Nut H.D.G. 62CN2HG
8	TC316	5/8 A325 Flat Washer Domestic H.D.G. 62NHFWDG



The Thermacouple™ Earth Energy System is protected under the following US Patents:

7,343,753 7,347,059 7,363,769
7,370,488 7,373,785 7,377,122

US, European, and Chinese Patents Pending.

Kelix™, Thermacouple™, It's Working!™ are trademarks of Kelix Heat Transfer Systems, LLC.

© 2009-2010 Kelix Heat Transfer Systems, LLC. All Rights Reserved.

Kelix Heat Transfer Systems, LLC
6505 E. 47th Street
Tulsa, Oklahoma 74145

Telephone: (918)-663-9177
Fax: (918)-663-9178
<http://www.kelix.com>